

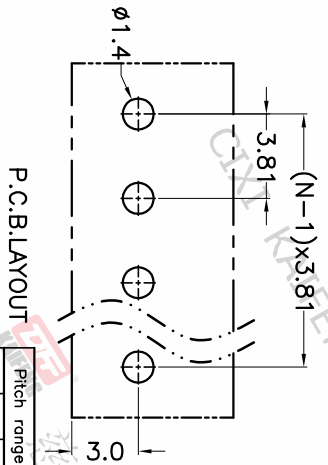
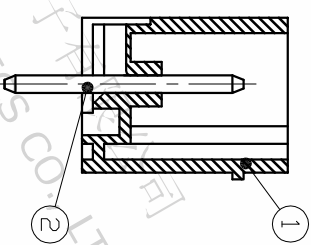
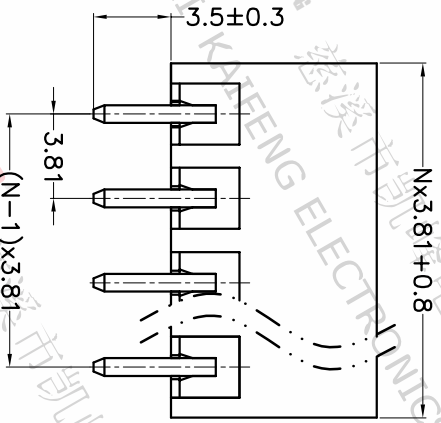
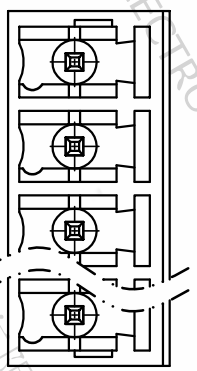
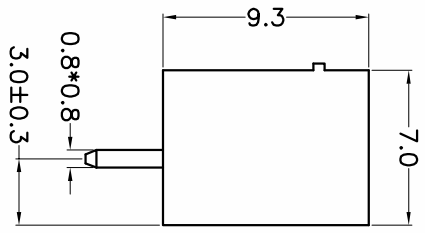
REV.	DESCRIPTION	DATE	DRAFTER	APPROVER
A1	DWG.REL	2020.6.08	ZHANG	JIN

- Material  
 @Housing : PA66, UL94V-0  
 @Pin header : Copper alloy, Tin plated

- Electrical  
 UL IEC  
 Rated voltage : 300V 250V  
 Rated current : 8A 7A

- Contact resistance : 20mΩ(Max)  
 Insulation resistance: 500MΩ/DC500V  
 Withstanding Voltage : AC1500V/1min

- Mechanical  
 Operating temperature: -40°C~+105°C  
 Soldering temperature: 250°C±5/5sec
- RoHS compliance



Pitch range	Nominal dimension range	PROJECTION
>0	>30	0.1/10
>6	>60	>150
~	~	~
6	10	24
~	~	~
10	24	30
~	~	~
24	30	60
~	~	~
30	60	100
~	~	~
60	100	150
~	~	~
100	150	±2°

DRAWING TYPE	CUSTOMER DRAWING
SCALE	1:1 SHEET 1 OF 1
DRAWING NO.	W100000862

PROJECTION	TITLE
UNIT	KF2EDGV-Y-3.81-XXP-1X
mm	
SHEET SIZE	A4
SERIES	KF2EDGV-Y

HOW TO ORDER  
 KF2EDGV-Y-3.81-XXP-1 X-XXXXX

MODEL Pitch:mm  
 No.of poles: 2~24P  
 Color: Request  
 G:Green R:Red  
 K:Black W:White  
 O:Orange B:Blue  
 GR:Gray

1:Single Pitch  
 2:Double Pitch

**DFE**  
 慈溪市凯峰电子有限公司  
 CIXI KAIFENG ELECTRONICS CO.,LTD